

There is a bus stop, number 3924 (Beatty Park), a short walk away from us.

Bus stop, number 3909 (Beatty Park), is across the road.

Use the [Transport for Ireland \(TFI\) Live app](#) to see information for these bus stops and other nearby bus stops.

Finding the Celbridge Primary Care Centre Building

The Celbridge Primary Care Centre uses the same entrance as Lidl.



To get to the building, you turn right at the roundabout. You can park in the Celbridge Primary Care Centre car park.



Parking

There is parking on the right-hand-side, facing the pharmacy and Tusla building.



There are four disabled parking spaces on the left-hand-side.



Entering our building

You can cross the roads in the car park at the zebra crossings.



You can enter the building using the footpath or these steps.

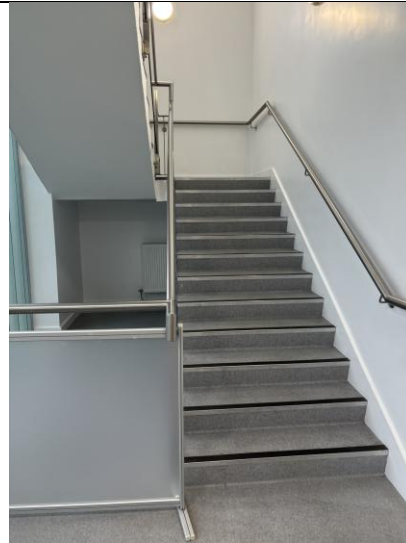


This is the main door to our building.



Our waiting area

Inside the door, you can turn left and use the stairs to go to Floor 2.



Or you can turn right and take the lift to Floor 2.



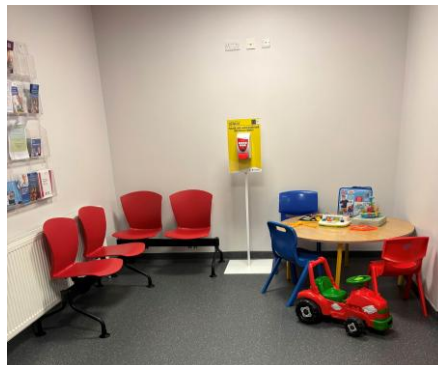
This is the door into the CDNT. You can press the silver button to open the door.



Tell the person at the reception desk who you are waiting for. They will call them for you.



The person you are meeting will meet you in waiting area. They will bring you to the room you'll play in.

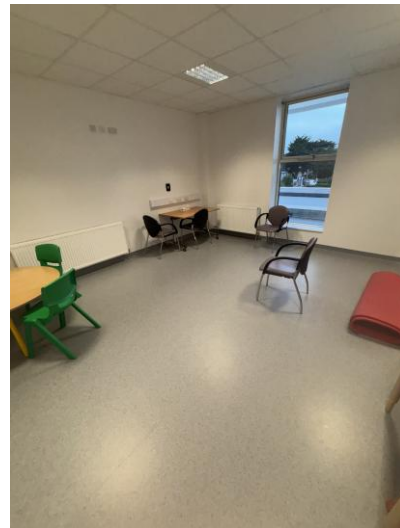


Our therapy rooms

You might walk down this corridor to go to the room where you will have your appointment.



Some of our clinic rooms look like this. You might play some games or do some activities at the table.



This is the gym.

